

Planting plan "Blue and white"



Properties

Colors: blue, white

Height: 0 cm – 130 cm

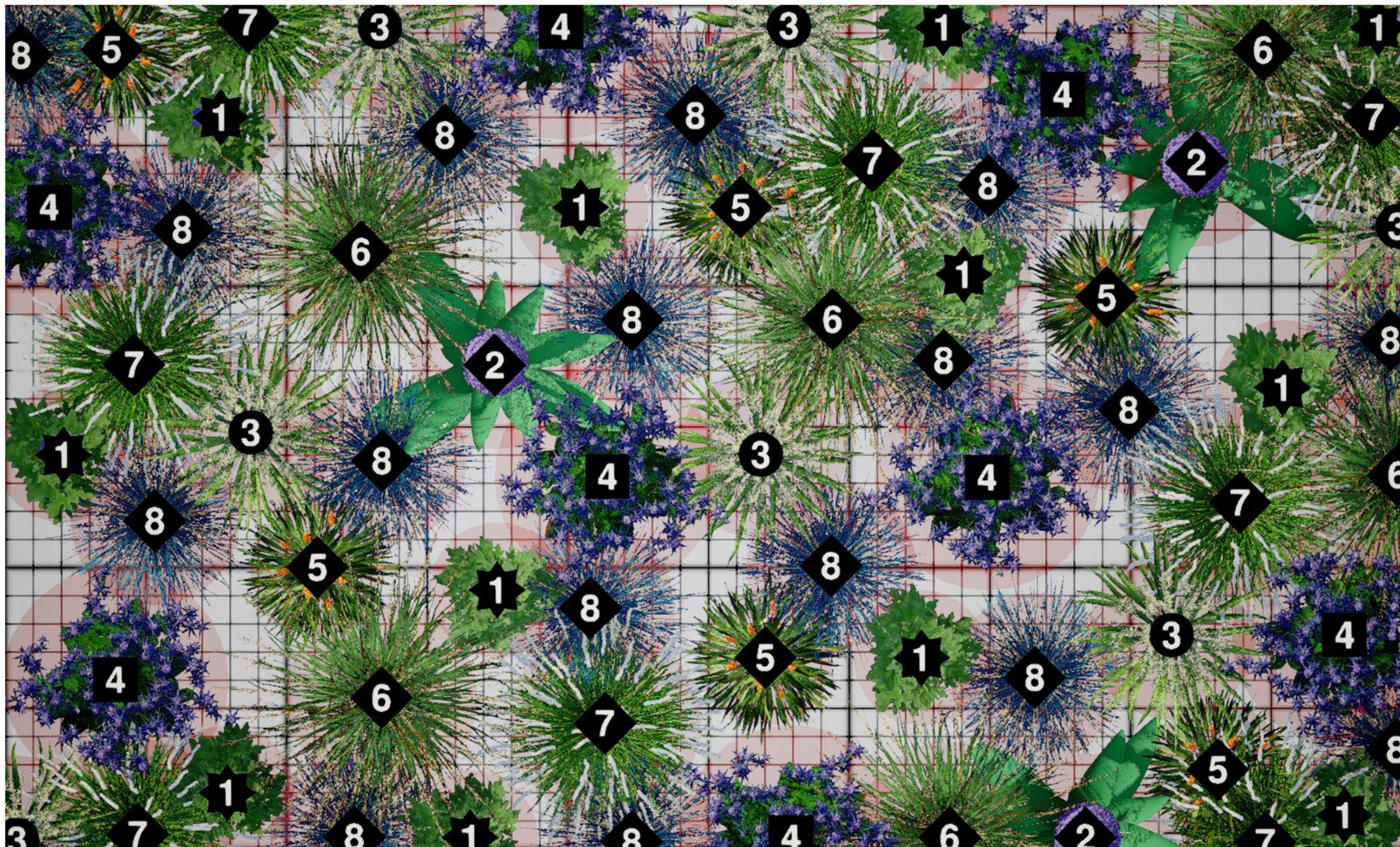
Flowering: V – VIII

Sun: high

Water: medium

Characteristic

A medium-height bed made up primarily of blue and white flowers. The structural plants are complemented by decorative grasses to create a subtle look.



Flower bed size: 5x3 meters

Plants

1 Aconitum napellus Monkshood
12 pcs 70 cm 25 cm

2 Allium giganteum Giant onion
3 pcs 150 cm 30 cm

3 Pennisetum Fountaingrasses
7 pcs 120 cm 30 cm

4 Eryngium Sea holly
8 pcs 100 cm 40 cm

5 Liriope muscari Blue lily turf
6 pcs 100 cm 25 cm

6 Molinia arundinacea Moor grass
6 pcs 120 cm 35 cm

7 Melica ciliata Silky spike melic
8 pcs 100 cm 35 cm

8 Helictotrichon sempervirens
17 pcs 50 cm 30 cm

Structural

These are distinct plants that form the structure of the flower bed.

Group

Main mass of the flower bed, they fill the space between the plants.

Ground-covering

Lowest level in the flower bed, they cover the soil and enclose the area.

Interspersed

Do not last very long, important for the first years after establishment.